

LEASEHOLD



Maisonette (EPC Rating: D)

**IVINGHOE ROAD,,
DAGENHAM,,RM8 2NB.**

Guide Price

£190,000

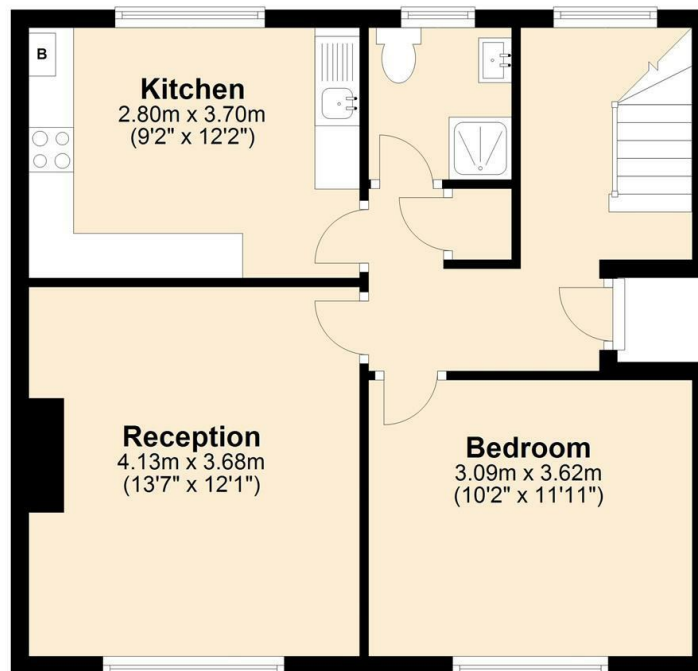


1 Bedroom Maisonette located in Dagenham

NO CHAIN, FIRST FLOOR flat/maisonette with LARGE PRIVATE GARDEN and OWN FRONT DOOR. Large kitchen diner, spacious lounge and double bedroom., NEW SHOWER ROOM and gas central heating. Guide Price £190,000-£200,000

Ground Floor

Approx. 51.0 sq. metres (549.2 sq. feet)

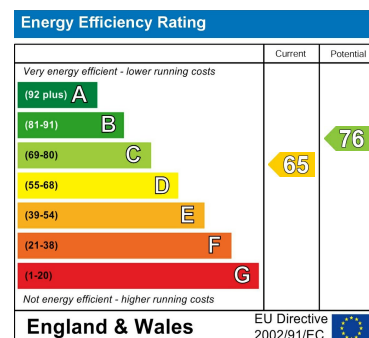


Total area: approx. 51.0 sq. metres (549.2 sq. feet)

Council Tax Band

A

Energy Performance Graph



Call us on

020 8593 5933

dagenham@steps.me.uk

www.steps.me.uk

Agents Note: Whilst every care has been taken to prepare these particulars, they are for guidance purposes only. All measurements are approximate and are for general guidance purposes only and whilst every care has been taken to ensure their accuracy, they should not be relied upon and potential buyers are advised to recheck the measurements.

STEPS

Estate Agents